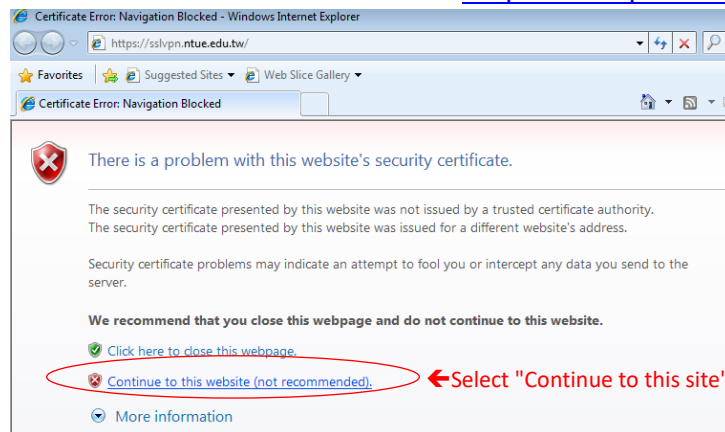


# National Taipei University of Education

## Create an Off-Campus Connection (SSL VPN): FortiClient Software Installation and Instructions

Follow steps 1 through 4 below to establish an off-campus connection (SSL VPN).

Step 1: Open IE or Chrome, and enter the URL <https://sslvpn.ntue.edu.tw>



Step 2: Login to the school SSLVPN authentication page, enter the account number and password

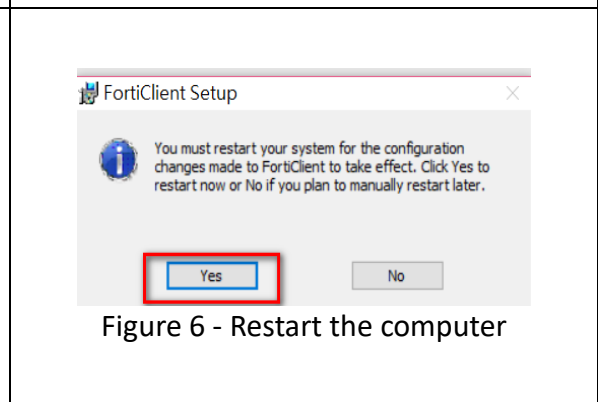
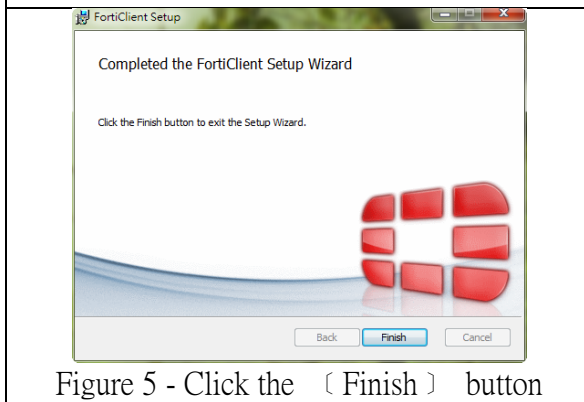
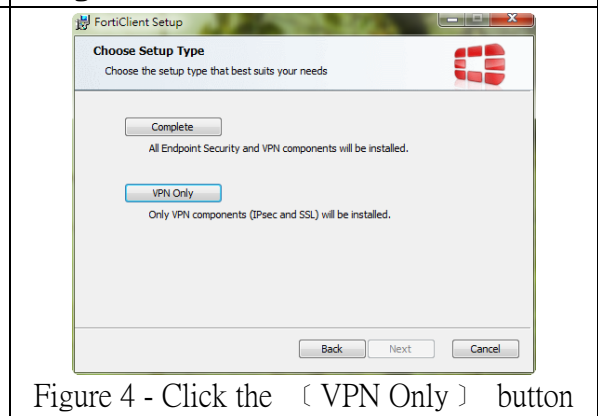
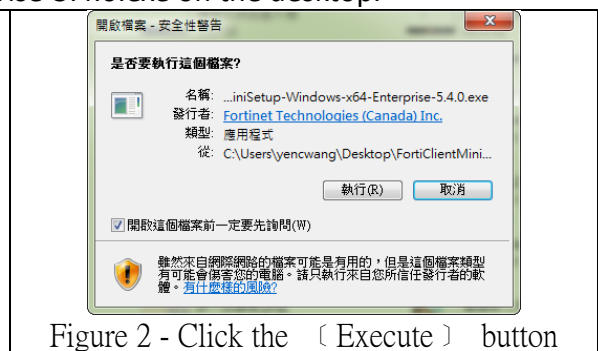


Step 3: Download and install the off-campus connection software FortiClient

(1) Download FortiClient Windows to the desktop (please select the version based on your computer's operating system.)



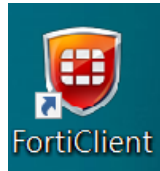
(2) To install the software, please click FortiClientMiniSetup-Windows-x64-Enterprise-5.4.0.exe on the desktop.



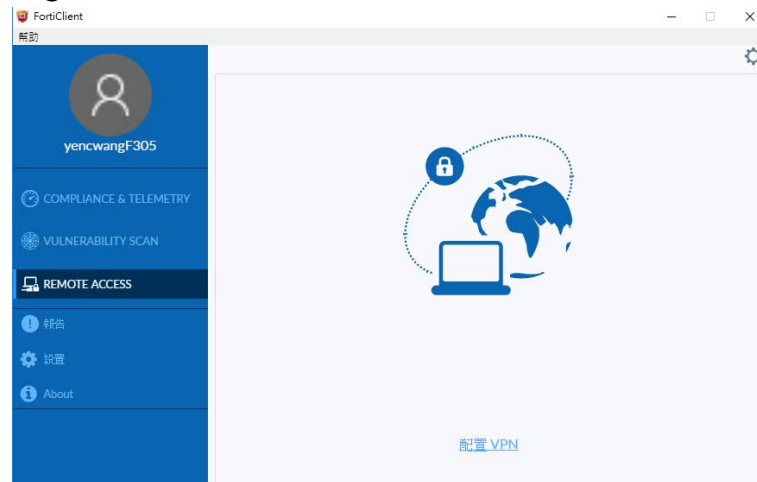
#### Step 4: Create an Off-Campus Connection

(1) Please click on the FortiClient shortcut on the desktop to launch the

software.



(2) Click "Configure VPN"

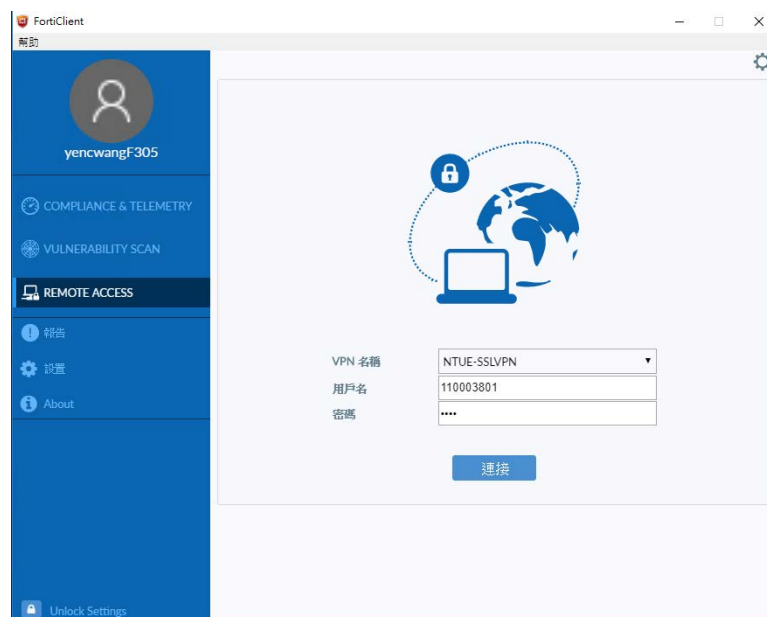


(3) **For the first connection**, please follow the instructions below and fill in the following information:

- Connection name: (Customize the name, ex: NTUE-SSLVPN)
- Description: (Please customize, or leave blank)
- Remote gateway: sslvpn.ntue.edu.tw
- Authentication: choose to save the login name,
- User name: Please fill in the "user name" (staff: email account, **Student**: student number), and check  "No prompt when server authentication is invalid"
- Finally, click "save".

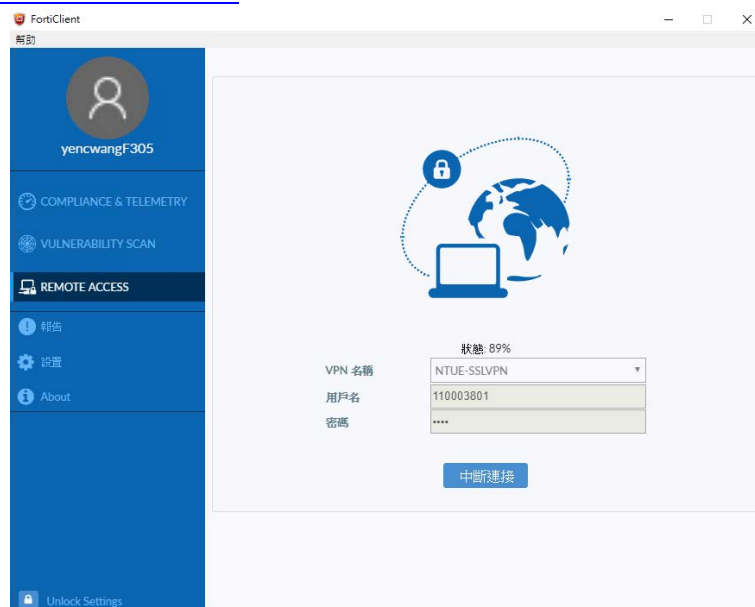


(4) Please enter "Password" (**Staff:** email password, **Student:** Last four digits on ID number), then click the "Connect" button.



(5) Check the connection status; the following graph indicates a successful connection.

**Microsoft Software Licensing (Start)** can only be done when connected, as described in [Documentation](#).

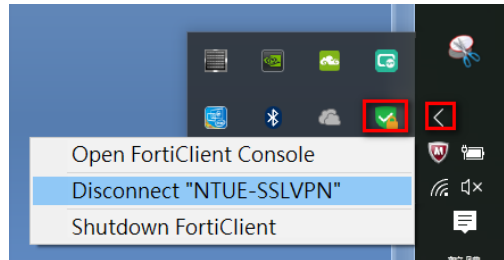


Supplementary Instructions:

(1) The connection status can be checked anytime; a lock represents it is connected.



(2) To disconnect, right-click on the FortiClient icon and select "Disconnect ..."



(3) If unable to create an off-campus connection (SSL VPN), please call Computer & Networking Center (Wang Yen ching, Technician, extension 83460).